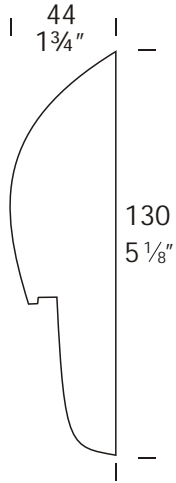


# Mouse Lite™

Cat. No. MOUSE

Cat. No. MOUSEss



The Mouse Lite™ is a solid bronze or solid 316 stainless steel luminaire for surface mounting. The shape is pleasing to the eye and blends unobtrusively into any situation. A space in the wall behind the luminaire is not required for cable connection due to the design which includes a cable junction cavity. There is no light directed upward or forward into the eye.

## Ordering Information

Luminaire Type

Material

Accessories

MOUSE - MouseLite

BZ - Bronze  
SS - 316 Stainless Steel

CJK150 - Cable Joint Kit

Ordering Example MOUSE SS - Mouse Lite in 316Stainless Steel

CJK150 - Cable Joint Kit

*(Accessories ordered separately)*



FACTORY: Ph: 64-9-528 9471 Fax: 64-9-528 9361.

USA: Ph. 310 560 7310 Fax. 1 877 692 4589.

hunza@hunza.co.nz www.hunza.co.nz

Specifications may change without notice.

130 Felton Matthew Ave, Glen Innes, Auckland, New Zealand.

3237 Long Island St, W. Sacramento, California 95691, USA.

Manufactured in New Zealand.

© 2003 Hunza Holdings Ltd

### Luminaire Construction

CNC finished machined from one of the following metals:

Investment cast in bronze with forged brass mounting plate.

Investment cast in 316 stainless steel with investment cast 316 stainless steel mounting plate.

### Mounting

Mount using a mounting plate fixed to the wall, etc. with 316 stainless screws. The luminaire is then fitted to the back plate using two pan head screws.

### Features

#### Lens:

2mm (3/32") frosted tempered shatter resistant glass.

Life Time Warranty.

#### Gasket:

Nytral 150°C (302°F).

#### Lamp Holder:

GU4 - 350°C (662°F) ceramic multi contact lamp holder with 180°C (356°F) silicone cables.

#### Accessories:

Cable Joint Kit (Cat. CJK 50)  
Not approved for USA /Canada.

### Standards

IP66  UL1838

### Luminaire Weight

BZ .760kg (1lb 10oz)  
SS .690kg (1lb 8oz)

### Power Supply

HUNZA® Inground or Wall Mount Transformer: not included.

### USA and Canada:

HUNZA® Wall Mount Transformer: not included.

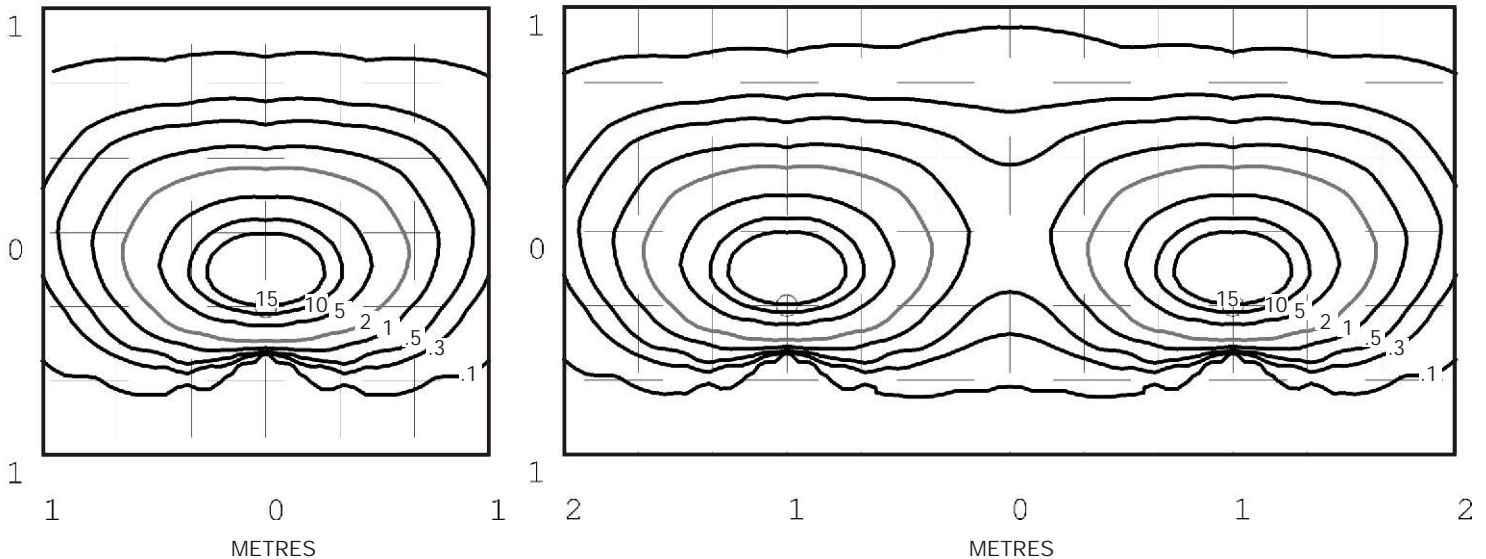
### Luminaire: supplied with

GU4 Bi-Pin 5, 10, 20 watt lamp max.

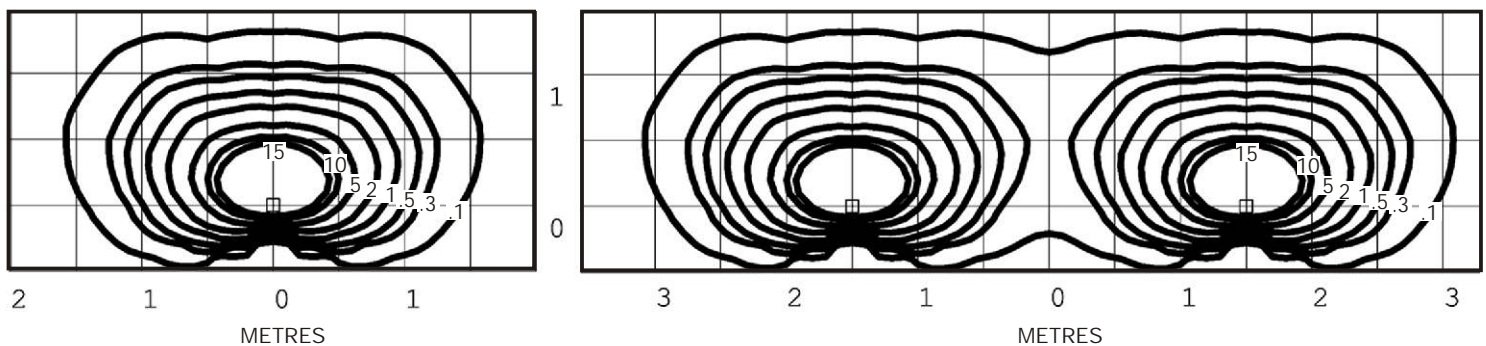
### USA and Canada:

GU4 Bi-Pin 5, 10 watt lamp max.

Mouse Lite 10 watt G4 Bi-Pin lamp - Lens height 400mm (15¾")



Mouse Lite 20 watt G4 Bi-Pin lamp - Lens height 400mm (15¾")



Isolux Lumens Plot - Footcandles = Isolux figures divided by 10.76



FACTORY: Ph: 64-9-528 9471 Fax: 64-9-528 9361.  
USA: Ph. 310 560 7310 Fax. 1 877 692 4589.  
hunza@hunza.co.nz www.hunza.co.nz  
Specifications may change without notice.

130 Felton Matthew Ave, Glen Innes, Auckland, New Zealand.  
3237 Long Island St, W. Sacramento, California 95691, USA.  
Manufactured in New Zealand.

© 2003 Hunza Holdings Ltd